



CITY TRACTOR

DAEGU FACTORY | 35, Nongongjoongang-ro 34-gil, Nongong-eup, Dalseong-gun, Daegu, Korea
SEOUL OFFICE | 2493, Nambusunhwan-ro, Seocho-gu, Seoul, Korea Fax : 82-2-3470-7484/5

www.daedong.co.kr

CONTACT FOR PRODUCT PARTPURCHASE · SERVICE **1588-2172**



KIOTI

CITY TRACTOR



All-around tractor for maintaining cities

MULTIPLE

TRACTOR FOR CITY LIFE

An absolute must for maintaining cities with sophisticated design and wide range of uses within a reasonable price range

With its remarkably unique exterior and soft, curvy shape, Kioti's Tractor for City Life lives up to our reputation of top-quality function and convenience for the last 68 years. From the initial design stage, we conceived of attachments which would provide quick and effective performance in any part of a city, and we developed a tractor which is easy to operate and perfectly suited to cities while being environment-friendly. One tractor and several attachments combine to form a multipurpose tractor for city management which can handle a wide range of tasks for the most reasonable and practical price out there.

1



CLEANER / SWEEPER

2



LOADER

3



SNOWBLOWER

TRACTOR FOR CITY LIFE

KIOTI CITY TRACTOR

Perfect for various attachments
KIOTI's Tractor for City Life



BASIC MODEL

5 6

STANDARD MODEL

5 6

1 2 3 4 +OPTION

FORCE MODEL

1 2 3 4 5 6 7 8

PREMIUM MODEL

1 2 3 4 5 6 7 8

4



BACKHOE

5



HEIGHT LIFT

6



TRAILER

7



FINISH MOWER

8



SPRAYER





1 **High-Tech Tier4 Engine**

The high-tech, environment-friendly engine produces low noise and vibrations as well as low emissions, minimizing environmental harm



2 **SUPER MOBILITY**

Two pedals for switching driving direction and comfortable seat to ensure pleasant ride



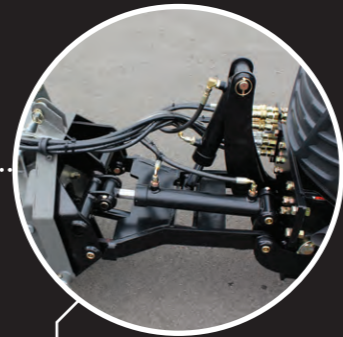
3 **Roomy Workspace**

A spacious driver's area with levers and pedals ergonomically designed with the driver's knees and ankles in mind



4 **Easy Steering Control**

Power steering wheel with smooth, easy maneuverability even for women or seniors



5 **Simply Attach and Detach Front Implements**

"Quick Attach" function allows you to easily attach and detach front implements



6 **Connectivity for Various Attachments**

Allows for simultaneous multi-connection and use of front and rear attachments

Sophisticated Design and Safety

Projection headlights for the driver's safety when driving at night or in unfavourable conditions such as snow, rain or fog



Incomparably Economical

With its electronic control system, it has excellent fuel efficiency which minimizes maintenance costs

Km/h
30
TOP SPEED



Apartment • Rural Complexes

Cleaning, snow removal, pest control, spraying, landscaping, managing facilities, transporting heavy loads (recycling, etc.) and high-pressure cleaning



Public Office

Cleaning, snow removal, pest control, spraying, transporting heavy loads and emergency firefighting



Schools

Cleaning, snow removal, pest control, spraying, landscaping and managing facilities



Factories

Cleaning, snow removal, transporting products, parts and equipment (tools), maintaining elevated areas, emergency firefighting, moving around and patrolling



Harbours • Airports

Cleaning, snow removal, transporting heavy loads, moving around and patrolling



Amusement Parks

Cleaning, snow removal, pest control, spraying, landscaping, managing facilities, transporting personnel (for tours, etc.) and heavy loads



Religious Facilities

Cleaning, snow removal, pest control, spraying, landscaping, managing facilities, transporting heavy loads



Army facilities

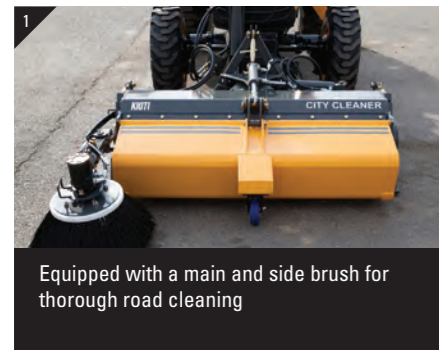
Cleaning, snow removal, transporting heavy loads (ammo, supplies, etc.), landscaping and field maintenance

CLEANER · SWEEPER

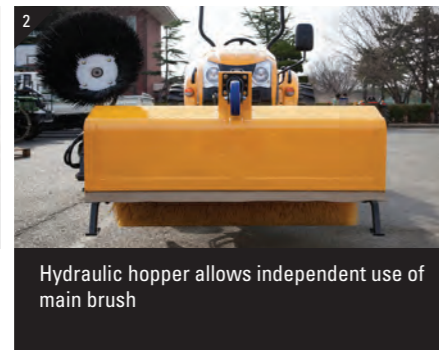
- Capable of cleaning and snow removal for large-scale apartments, parks, schools, factories and road surfaces
- Equipped with a hydraulic hopper (hopper: stores debris from road surfaces)
- After lifting the hopper, you can control the main brush independently, allowing for more effective cleaning and snow removal
- Can be manoeuvred forward, backward and left to right, and is easy to drive on a variety of road conditions



MODEL	CCL125B	CCL125	CCL125S
CLEANING WIDTH	1250 mm	1250 mm	1250 mm
DRIVING SYSTEM	PTO (MECH.)	PTO (MECH.)	PTO (MECH.)
MAIN BRUSH	ADJUSTABLE ANGLE	20°	20°
	REVOLUTIONS PER MINUTE	180 ~ 250 rpm	180 ~ 250 rpm
	DIAMETER	φ400 mm	φ400 mm
SIDE BRUSH	φ500 mm	φ500 mm	φ500 mm
HOPPER	-	105ℓ	105ℓ
WATER SPRAYER	-	-	●



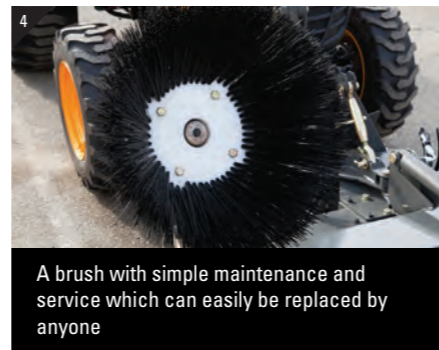
Equipped with a main and side brush for thorough road cleaning



Hydraulic hopper allows independent use of main brush



Left-right manoeuvrability provided by hydraulic cylinder which can be simply attached to the tractor's front end



A brush with simple maintenance and service which can easily be replaced by anyone

LOADER

- Streamlined boom provides extended visibility when working and attaching or detaching implements
- Automatic relief valve protects the loader and bucket attachments when carrying excessive loads
- Floating function allows for effective work on a variety of ground conditions (puddles, hills, etc.)
- Regeneration function permits quick bucket work, thereby maximizing efficiency

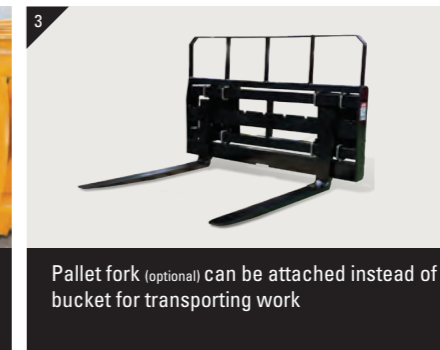
MODEL	CFL400
BUCKET SIZE (WIDTH)	1500 mm
LIFT VOLUME (AT PIVOT PINS)	523 kg
STRUCK CAPACITY	200ℓ
HEAPED CAPACITY	270ℓ
OPTION	Pallet Forks · Blade



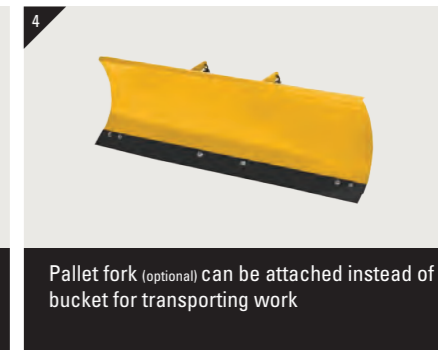
The streamlined frame design offers a wider field of vision and the cover protects the hydraulic hose



Quick Attachment Mechanism allows implements to be quickly and easily switched with simple attachment and removal



Pallet fork (optional) can be attached instead of bucket for transporting work



Pallet fork (optional) can be attached instead of bucket for transporting work

SNOWBLOWER

- A powerful fan equipped to the central snow collector delivers outstanding performance during large snow removal jobs
- Rotatable in the opposite directions, the left/right hydraulic cylinders make adjusting the chute deflector's angle easy and allow snow to be discharged at long distance
- Duel-type gearbox allows selective driving based on the PTO's rotation direction
- Works effectively on any road surface with the height-adjustable guide



MODEL	CSB165
WORKING WIDTH	1650 mm
WORKING HEIGHT	711 mm
DIMENSIONS (LxWxH)	965 x 1650 x 1397 mm
FAN ROTATION SPEED	702 rpm
FAN DIAMETER	558 mm
TOTAL WEIGHT	489 kg
DRIVING SYSTEM	Mid PTO



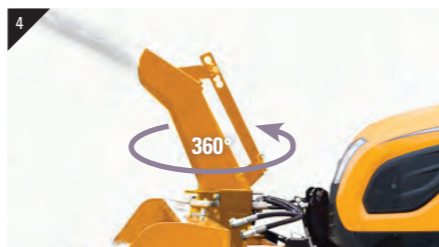
1 Equips to the front of the tractor, offering a wide field of vision while driving



2 Outstanding performance and sturdy durability make it ideal for removing large amounts of snow



3 A powerful fan equipped to the central snow collector allows long-range snow discharge (over 10m)



4 360° rotatable chute deflector enables snow to be discharged in any direction

BACKHOE

- Swing post with a maximum left to right rotation of 170°
- Sturdy boom and arm made with a C-shape steel plate using bending structure
- Superfine hydraulic cylinder with a high-pressure seal ring for maximum durability
- Bucket anchor (optional) for transporting heavy loads such as lumber and rocks



MODEL	CBH220
BUCKET SIZE (WIDTH)	228 / 305 / 406 / 457 / 610 / 915 mm
EXCAVATION DEPTH	2200 mm
EXCAVATION CAPACITY	1270 kg
TOTAL WEIGHT	450 kg



1 Convenient levers for enhanced efficiency and a seat with a broad operating radius for easy manoeuvring



2 Fork-style stabilizer legs are securely supported by the ground, enabling safe and stable working



3 Sturdy boom and arm with high-pressure hydraulic cylinders for maximum durability and no bending or distortion



4 Optional high-strength bucket for stable work

HEIGHT LIFT

- Semi-permanent BLDC hydraulic motor and a wide turning radius of up to 150°
- Minimal battery usage and automatic shutdown when dormant
- Actuator's activation speed is based on control input, guaranteeing smooth up and down movement and safe work at all times
- 3-stage movement at heights of up to 5 m
- Tools can be conveniently laid out on work table attached to platform



MODEL	CHL400E
DIMENSION (L X W X H)	1790 x 2850 x 1800 mm
PLATFORM DIMENSION (L X W X H)	665 x 710 x 1100 mm
RATED VOLTAGE (DC)	48 V
HYDRAULIC MOTOR (BLDC)	2.4 kW
HYDRAULIC PUMP DISCHARGE RATE	1.1 cc/rev
HYDRAULIC PUMP CAPACITY	5ℓ
LOADING CAPACITY	100 kg
PLATFORM BASE HEIGHT (RAISED / LOWERED)	3400 / 530 mm
MAXIMUM WORKING HEIGHT (BASED ON ADULT BODY)	5000 mm
WORKING TIME PER 1 CHARGE	6 ~ 8 hours



1 Extended working time enabled by a battery which lasts up to 8 hours per charge



2 Sturdy platform with the driver's safety in mind when working at high altitudes



3 Folding hydraulic support to fix the lift body in place



4 Equipped with a link for easy attachment to and removal from tractor

TRAILER

- Rotary trailer jack for easily adjusting ground clearance and balance
- A variety of trailers to choose from for every use



MODEL	CTR600
TOTAL WEIGHT	150 kg
MAXIMUM LOADING CAPACITY	600 kg
DIMENSION (L X W X H)	2780 x 1500 x 863 mm
CARGO BOX DIMENSION	1500 x 988 x 400 mm
MAIN SPECIFICATIONS	Manual Dump 14-inch Aluminum Wheels Rooftop Lift - Inertia Brakes
MAIN OPTIONS	Front Box - Interior Flooring Interior LED - Roof Sticker



1 Hitch ball and coupling for simple locking and attaching/ detaching



2 Hitch ball on the back of the trailer allows it to be connected to other equipment and trailers can be connected with multiple connections



3 Fenders to protect cargo from road dust and other debris



4 Turn signals connected electronically to the main tractor

FINISH MOWER

- Cutting knife is made from a special material which minimizes wear even during extended usage
- Rear discharge function with even discharge setting eliminates the need for extra work
- Left and right links move up and down, providing smooth movement when raising or lowering the 3-point hitch
- Compact structure guarantees sturdy durability



MODEL	CFM180
CUTTING WIDTH	1800 mm
TOTAL WEIGHT	300 kg
DRIVING SYSTEM	PTO (REAR)



1 Easily attachable to the tractor's rear 3-point hitch



2 Adjustable cutting height perfect for efficient lawn care



3 Useful for weeding as well as cutting grass



4 Gearbox and cutting knife with proven durability in the North American market

SPRAYER

- Capable of various jobs, including firefighting, washing and spraying, and hose reel (optional) attachment possible
- Reduced pump weight and size (half the size and weight compared to other companies)
- Integrated pump device-water pump can be simply attached to the rear 3-point hitch
- Distributor which can be controlled from the driver's seat and mixing device for blending chemical solutions



MODEL	CSP400R	CSP400	CSP400L
TANK VOLUME	400ℓ	400ℓ	400ℓ
DIMENSIONS (L X W X H)	1210 x 1050 x 1070 mm	1210 x 1050 x 1070 mm	1210 x 1050 x 1070 mm
DRY WEIGHT	195 kg	195 kg	225 kg
PUMP TYPE	Transverse 6-barrel piston type		
REVOLUTIONS PER MINUTE	2000 rpm	2000 rpm	2000 rpm
SUCTION/DISCHARGE RATE	50ℓ /min	50ℓ /min	50ℓ /min
WORKING PRESSURE	5.0 Map	5.0 Map	5.0 Map
HOSE REEL HOSE	Φ10 x 100 mm (MANUAL)	Φ10 x 50 mm (AUTOMATIC)	Φ10 x 100 mm (MANUAL)
BLOWING FAN	—	●	●
SPEED SPRAYER	NOZZLE SIZE X QUANTITY	—	Φ1.0 m (1.2) X 12
	SPRAYING ANGLE	—	210°
	EFFECTIVE SPRAYING HEIGHT X WIDTH	—	5 x 8 m
PISTOL NOZZLE SPRAYING RANGE	15 m	15 m	15 m
OPTION	Auxiliary wheel/spraying system controlled by driver		



1 Adjustable spray angle and lockable switch nozzle



2 Reduced weight and size of transverse 6-barrel piston pump for high-pressure spraying



3 Distributor which can be conveniently controlled from the driver's seat



4 Sprayer with a maximum range of 15m which increases the effectiveness of close-range spraying

ATTACHMENT	MODEL	REMARK
TRAILER	CTR600	
HEIGHT LIFT	CHL400E	
SPRAYER	CSP400R	Tank · Hose reel 100m (MANUALLY RETRACTABLE)
	CSP400	Tank · Blowing fan · Hose reel 50m (AUTOMATICALLY RETRACTABLE)
	CSP400L	Tank · Blowing fan · Hose reel 100m (MANUALLY RETRACTABLE)
LOADER	CFL400	
	PINCERS (OPTION)	
BACKHOE	CBH220	
CLEANER	CCL125B	Brush
	CCL125	Brush · Hopper
	CCL125S	Brush · Hopper · Water sprayer
SNOWBLOWER	CSB165	
FINISH MOWER	CFM180	



TRAILER



HEIGHT LIFT



SPRAYER



LOADER



BACKHOE



CLEANER / SWEEPER



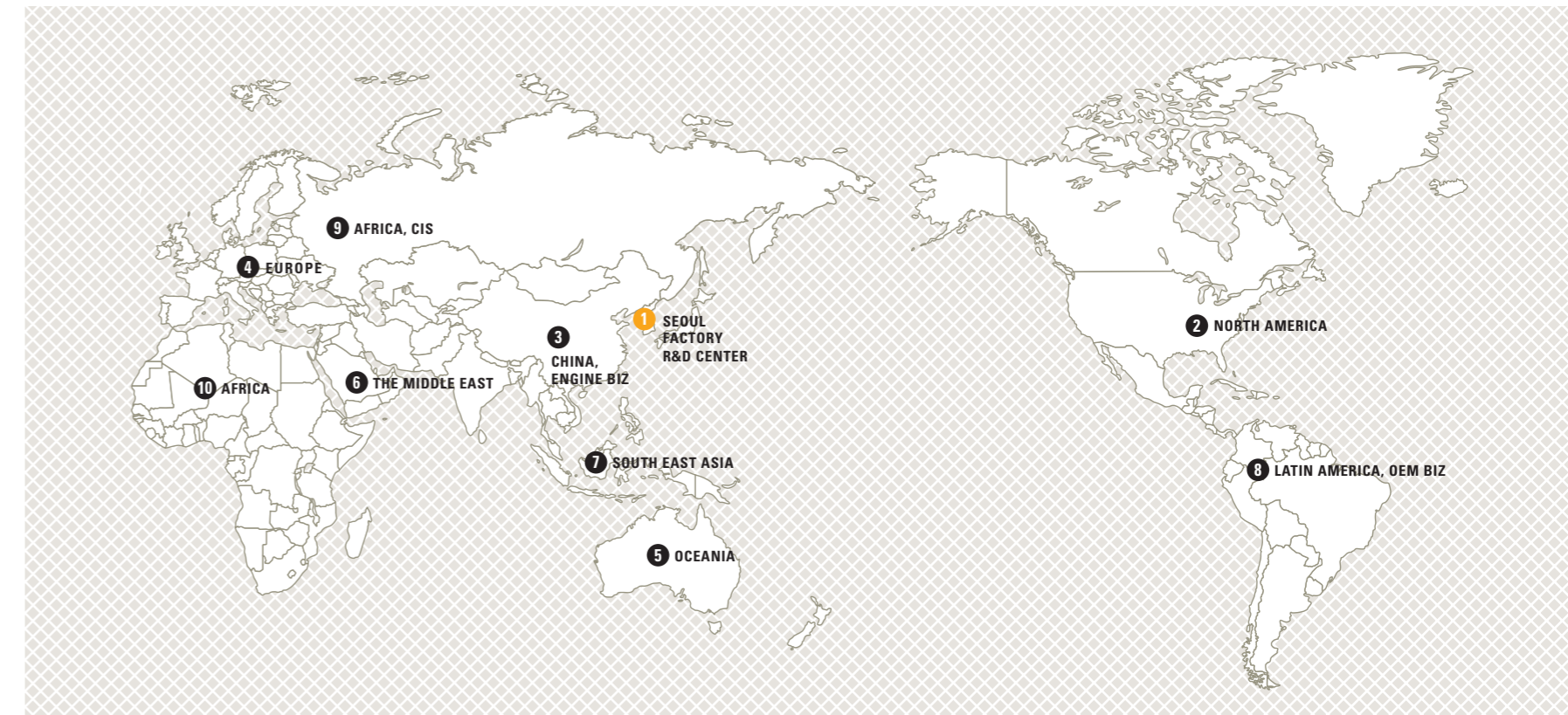
SNOWBLOWER



FINISH MOWER

ITEM	BASIC MODEL		STANDARD MODEL		FORCE MODEL	
MODEL						
	CT4010B-AU	CT4010HB-AU	CT4010-AU	CT4010H-AU	CK4010F-AU	CK4010HF-AU
Engine	Engine Type		Tier3 (38HP)			
Tractor body	Length x Width x Height (mm)		3010 x 1560 x 2460			
	Total weight (kg)		1300			
	Min. ground clearance (mm)		310			
Driving system	Forward / reverse gears		9F x 3R			
	Tire size front / rear (inch)		25 x 8.5 - 14 / 15 - 19.5			
PTO	PTO type (PTO speed (rpm))		Live 1 speed (540)			
	Hydraulic outlet		Rear 4			
2WD		●	●			
4WD		Opt.	Opt.	●	●	●
Transmission Type		Mechanical	HST	Mechanical	HST	Mechanical
ROPS	ROPS		●	●	●	●
	Wind Shield		Opt.	Opt.	Opt.	Opt.
	CAB		Opt.	Opt.	Opt.	Opt.
Main specifications	3-point hitch		Opt. (FIXED)	Opt. (FIXED)	Fixed	Fixed
	Rear PTO				●	●
	HYDRAULIC PORT				●	●
	Mid PTO				Opt.	Opt.
	JoyStick				Opt.	Opt.
Spec. for convenience features						
Attachment	Trailer (cargo, driver)		●	●	●	●
	Height lift		●	●	●	●
	Sprayer				●	●
	Hydraulic implement				●	●
	Rotavator				●	●
	Plow				●	●
	Loader				Opt.	Opt.
	Backhoe				Opt.	Opt.
	Cleaner				Opt.	Opt.
	Snowblower				Opt.	Opt.
Finish mower					●	

These specifications are subject to change without notice.



TERRITORY	NAME	TEL	E-MAIL
① SEOUL		2493, Nambusunhwan-ro, Seocho-gu, Seoul, Korea Fax : 82-2-3470-7484/5	
① FACTORY		35, Nongongjoongang-ro 34-gil, Nongong-eup, Dalseong-gun, Daegu, Korea	
① R&D CENTER		2493, Nambusunhwan-ro, Seocho-gu, Seoul, Korea Fax : 82-2-3470-7484/5	
② NORTH AMERICA	J.B.Park	82-2-3470-7455	jbpark@daedong.co.kr
③ CHINA, ENGINE BIZ	E.J.YANG	82-2-3470-7464	ejyang@daedong.co.kr
④ EUROPE	S.H.Kim	+31 (0)181 45 88 61	yuny@daedong.co.kr
⑤ OCEANIA	Jenna yun	82-2-3470-7345	jbpark@daedong.co.kr
⑥ THE MIDDLE EAST	H.G.Lim	82-2-3470-7419	startrup99@daedong.co.kr
⑦ SOUTH EAST ASIA	J.Y.Lee	82-2-3470-7462	jylee@daedong.co.kr
⑦ SOUTH EAST ASIA	Nash.Choi	82-2-3470-7453	nashchoi@daedong.co.kr
⑧ LATIN AMERICA, OEM BIZ	Jin Song	82-2-3470-7449	jhsong@daedong.co.kr
⑨ AFRICA, CIS	J.S.Kim	82-2-3470-7459	kimjs@daedong.co.kr
⑩ AFRICA	J.H.Park	82-2-3470-7445	juhnpark@daedong.co.kr